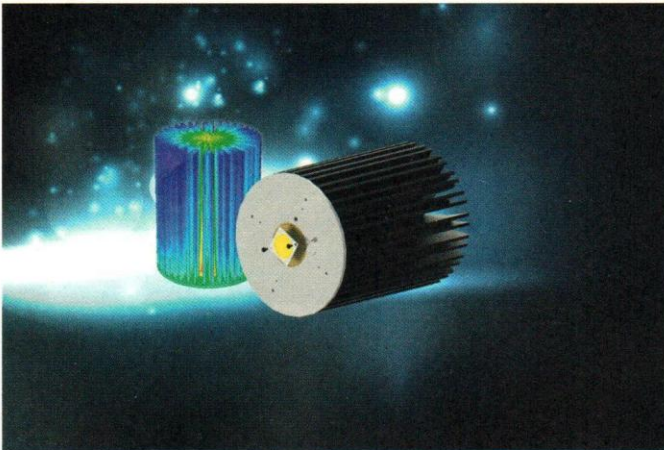


MechaTronix CoolBay® Tera Is Approved for 50,000 lumen COB

New worlds of LED lighting are revealing themselves, worlds we couldn't dream about just a few years ago. When Citizen created the "Monster" COB package CLU550, capable of creating over 50,000 lumen of light output, it wasn't sure if anyone would be able to cool it down to temperatures which would lead to the life time this kind of industrial application would require.



MechaTronix claims CoolBay® Tera to be the most efficient fully passive LED cooler ever developed



COOL SOLUTION FOR *HOT* APPLICATIONS

HIGH THERMAL CONDUCTIVITY PCB SOLUTIONS MANUFACTURING



ALUMINUM OXIDE NANOPOROUS COMPOSITE

copper
dielectric
aluminum



3012 Lm, 30 W

BE UNIQUE AND BECOME A WINNER



2500 Lm, 23 W

HIGH HEAT DISSIPATION = BEST PERFORMANCE



GET MAXIMUM USE BOTH SIDES



12408 Lm, 117 W

WHEN EXPENSIVE COMPONENTS REDUCE COST VALUE



5856 Lm, 54 W



3416 Lm, 31 W

WHEN SIZE DOES NOT MATTER










LLC "RUSALOX" 125124, Moscow, Russia, 1st Street of Yamskoye Pole, 9/13, office 304
 Phone: +7 (499) 557-0065, Mobile: +7 (964) 587-1110, +7 (968) 642-7328, meo@rusalox.ru imme@rusalox.ru, rusalox.ru

ELECTROLUBE

THE SOLUTIONS PEOPLE

A leading light in engineering improved LED performance

We don't just strive to exceed expectations, we innovate to make the best of industry, perform better.

The LED market is the perfect example of our capabilities in action. LEDs are considerably more efficient than traditional lighting forms, but they do still produce some heat, which without thermal management will have an adverse effect on both the efficiency and operational lifetime of the LED.

From bonding and non-bonding thermal interface materials, to thermally conductive resins and protective conformal coatings, our solutions offer the ultimate level of protection and heat dissipation for your LED application.

With an expansive product range and a strong emphasis on research and collaboration, we provide a complete electro-chemical solution to the world's leading LED manufacturers.

Isn't it time you discovered how Electrolube can serve you?

+44 (0)1530 419600

www.electrolube.com



Nov 8-11, 2016, Messe München
Stand B1-259 & A6 - 214



Scan the code to discover our full spectrum of electro-chemical solutions.

Electronic & General
Purpose Cleaning

Conformal
Coatings

Encapsulation
Resins

Thermal Management
Solutions

Contact
Lubricants

Maintenance
& Service Aids